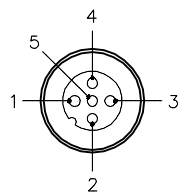
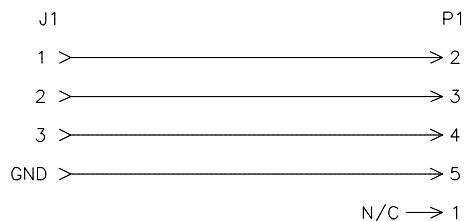


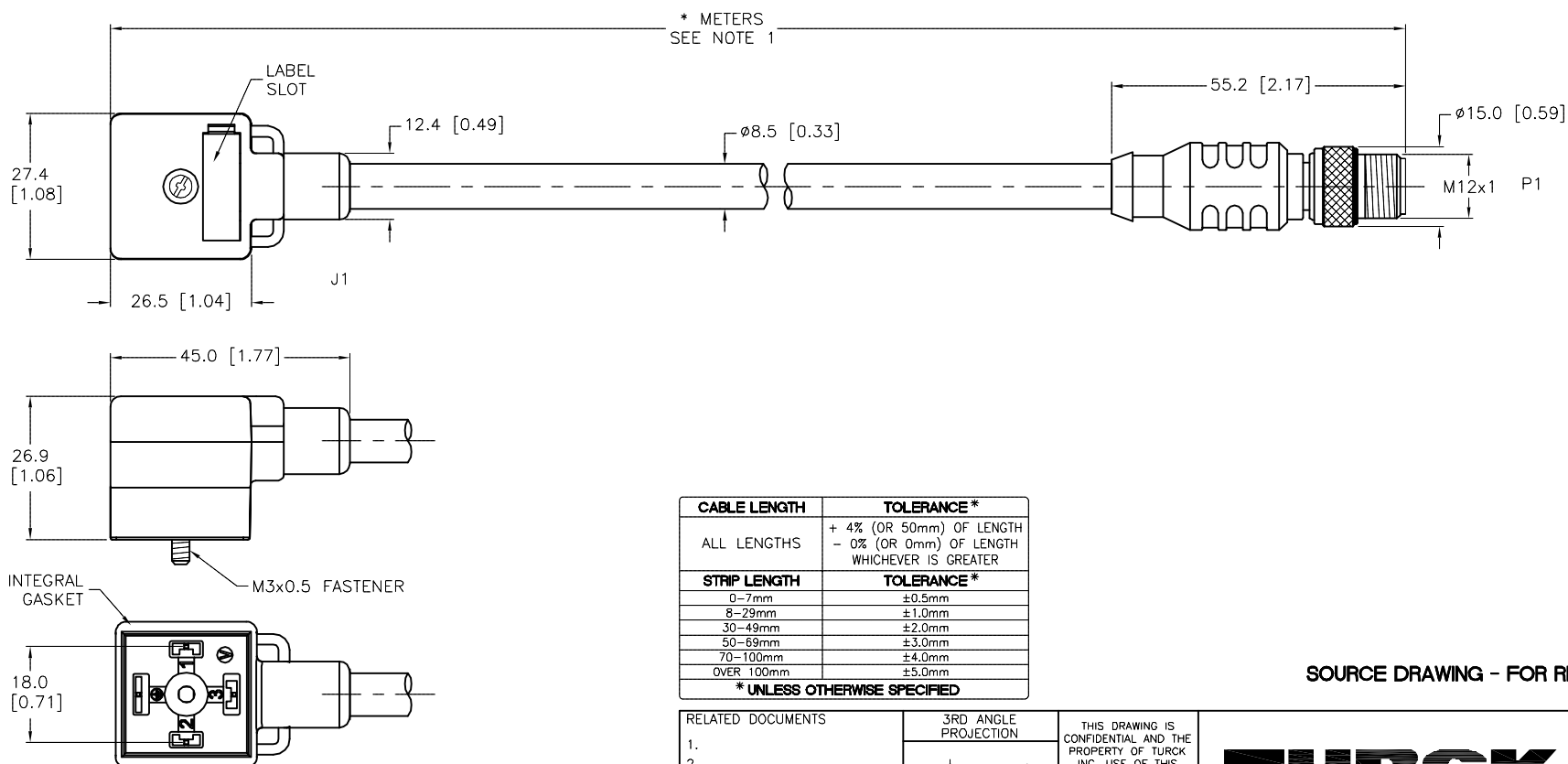
1 = BROWN  
2 = BLUE  
3 = WHITE  
GND = BLACK



1 = N/C  
2 = BROWN  
3 = BLUE  
4 = WHITE  
5 = BLACK



CONTACT CARRIER MATERIAL	NYLON OR TPU
MOLDED HEAD MATERIAL/COLOR	TPU/TRANSLUCENT BLK (J1), YELLOW (P1)
CONTACT MATERIAL/PLATING	BRASS/SILVER (J1), GOLD (P1)
COUPLING NUT MATERIAL/FINISH	BRASS/NICKEL (P1)
RATED CURRENT [A]	4.0 A
RATED VOLTAGE [V]	0-220 VAC/VDC
OUTER JACKET MATERIAL/COLOR	CPE/YELLOW
CONDUCTOR INSULATION MATERIAL	EPDM
NUMBER OF CONDUCTORS [AWG]	4x18 AWG
OPERATING TEMPERATURE	-50°C to +105°C (-58°F to +221°F)
PROTECTION CLASS	MEETS NEMA 1,3,4,6P AND IEC IP67

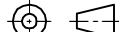



CABLE LENGTH	TOLERANCE *
ALL LENGTHS	+ 4% (OR 50mm) OF LENGTH - 0% (OR 0mm) OF LENGTH WHICHEVER IS GREATER
STRIP LENGTH	TOLERANCE *
0-7mm	±0.5mm
8-29mm	±1.0mm
30-49mm	±2.0mm
50-69mm	±3.0mm
70-100mm	±4.0mm
OVER 100mm	±5.0mm
<b>* UNLESS OTHERWISE SPECIFIED</b>	

**SOURCE DRAWING - FOR REFERENCE ONLY**

NOTES:

1. "\*" INDICATES CABLE LENGTH IN METERS. CONTACT TURCK TO ORDER SPECIFIC LENGTHS.

RELATED DOCUMENTS		3RD ANGLE PROJECTION			THIS DRAWING IS CONFIDENTIAL AND THE PROPERTY OF TURCK INC. USE OF THIS DOCUMENT WITHOUT WRITTEN PERMISSION IS PROHIBITED.				3000 CAMPUS DRIVE MINNEAPOLIS, MN 55441 1-800-544-7769 (763) 553-7300 (763) 553-0708 fax www.turck.us		
1. 2. 3. 4.											
MATERIAL		DRFT		RDS	DATE	07/28/08		DESCRIPTION			
SEE SPECIFICATIONS		APVD			SCALE	1=1.3		VAS 3-A644-*M-RSE 5.42T			
		UNIT OF MEASUREMENT									
FINISH		MILLIMETER [ INCH ]				IDENTIFICATION NO.				REV	
SEE SPECIFICATIONS						CONTACT TURCK FOR MORE INFORMATION				D	
		DO NOT SCALE THIS DRAWING				FILE: 777015277				SHEET 1 OF	

D	UPDATE TO NEW VALVE PLUG BODY	RDS	08/23/13	43028
REV	DESCRIPTION	BY	DATE	ECO NO.